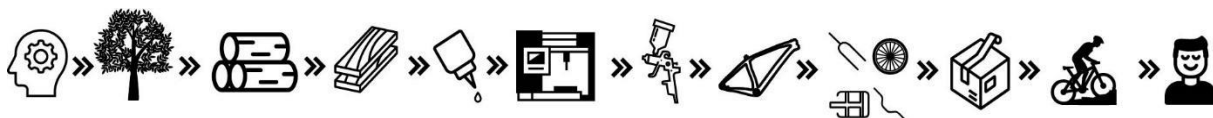




# WOODALPS

WOODEN BIKES MADE IN THE ALPS

## BRANCHY gravel bike



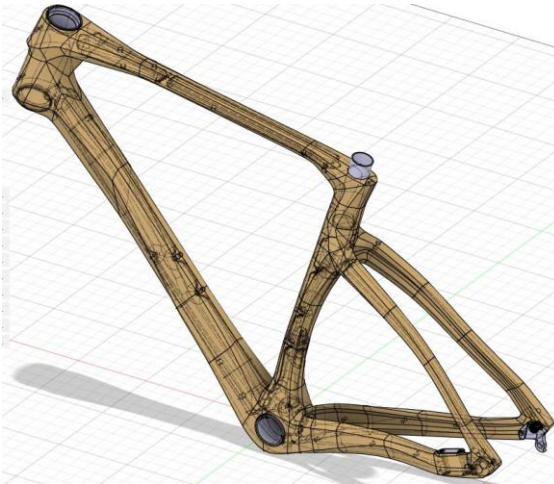
Société par actions simplifiée (SASU) - Capital de 1000.00€ - SIRET 904680691 00014

NAF-APE: 3092Z - RCS/RM: 904 680 691 - Numéro TVA: FR 30904680691

# I. The BRANCHY Frame

The BRANCHY frame is made from ash wood sourced from French forests.

Frame design is carried out using computer software. WOODALPS frame designs take full advantage of the potential of wood, which allows the creation of organic, dynamic shapes.



## 2. MANUFACTURING

Machining is performed on CNC machines with a precision of around one tenth of a millimetre



The frame consists of two hollowed half-shells glued together, each made up of 5 pieces of wood

Carbon inserts provide the appropriate interfaces for components, particularly at the headset, bottom bracket, and seat post.

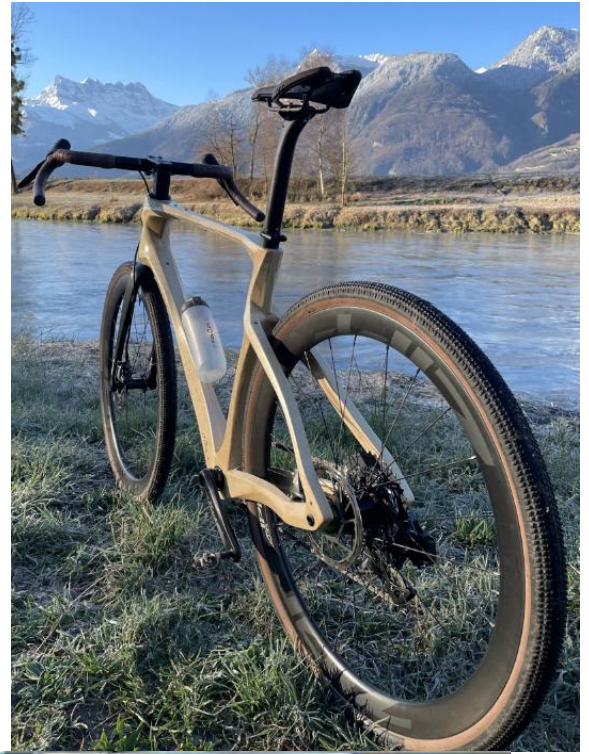


### 3. Finish & Maintenance

The frame is protected with professional marine-grade varnishes, highly resistant to impacts and UV. No specific maintenance is required — upkeep is the same as for carbon or aluminium bikes. The frame can be safely cleaned with a high-pressure water jet (avoid the bearing areas).



## 4. BRANCHY Images







## 5. Performance

WOODALPS bikes are not works of art — they are high-performance bikes designed to give you real enjoyment on the road and trails.

The stiffness of the BRANCHY frame is comparable to hardtail aluminium and carbon frames. Its weight is approximately 2.3 kg (size L).

## 6. Tests and Warranty

In addition to over 14 years of field testing, WOODALPS frames are bench-tested to ISO 4210 standard, both on our in-house test rig and in an accredited testing laboratory. The oldest WOODALPS frames (built before the company was founded) are 14 years old and remain in perfect condition.

Frames are covered by a 10-year warranty from the date of delivery.



	<p align="center"><b>RAPPORT D'ESSAIS</b> <b>TEST REPORT</b></p>	<p>Date : 16/09/2025</p>
<p>N° DOSSIER : 08-25-1051</p>	<p align="center"><b>N° DOCUMENT : ES08-25-1051</b></p>	<p>Page : 1 sur 4</p>

Demandeur :  
Requested by

**WOODALPS**  
16 Route du champ poirier  
74500 - LUGRIN  
FRANCE

Objet :  
Object

**Essais selon Devis n° DV2025-0684**  
**Tests according to Quote n° DV2025-0684**

Documents de référence :  
Reference documentation

Référentiel : **NF EN ISO 4210-2 Janvier 2023**  
Standard **NF EN ISO 4210-2 January 2023**

Type de bicyclette :  
Bicycle type

**Ville et tout chemin**    **Jeune adulte**    **Tout terrain**    **Course**  
**City and trekking**   **Young adult**   **Mountain**   **Racing**

Equipement :  
Equipment

**Cadre *Frame***

△Référence commerciale  
△Commercial reference

**Cadre gravel BRANCHY MSN002**

△Lot de fabrication :  
△Batch no

/

△Taille :  
△Size

/

Date de réception de l'échantillon : **14/08/2025**  
Date of receipt sample   **08/14/2025**

<p># <b>NF EN ISO 4210-2 Janvier 2023 §4.2 ; 4.5 ; 4.8</b> <b>NF EN ISO 4210-2 January 2023 §4.2 ; 4.5 ; 4.8</b></p>	<p align="center"><b>CONFORME</b> <b>CONFORM</b></p>
--	--

au regard des résultats des tests réalisés *according to the results of tests carried*

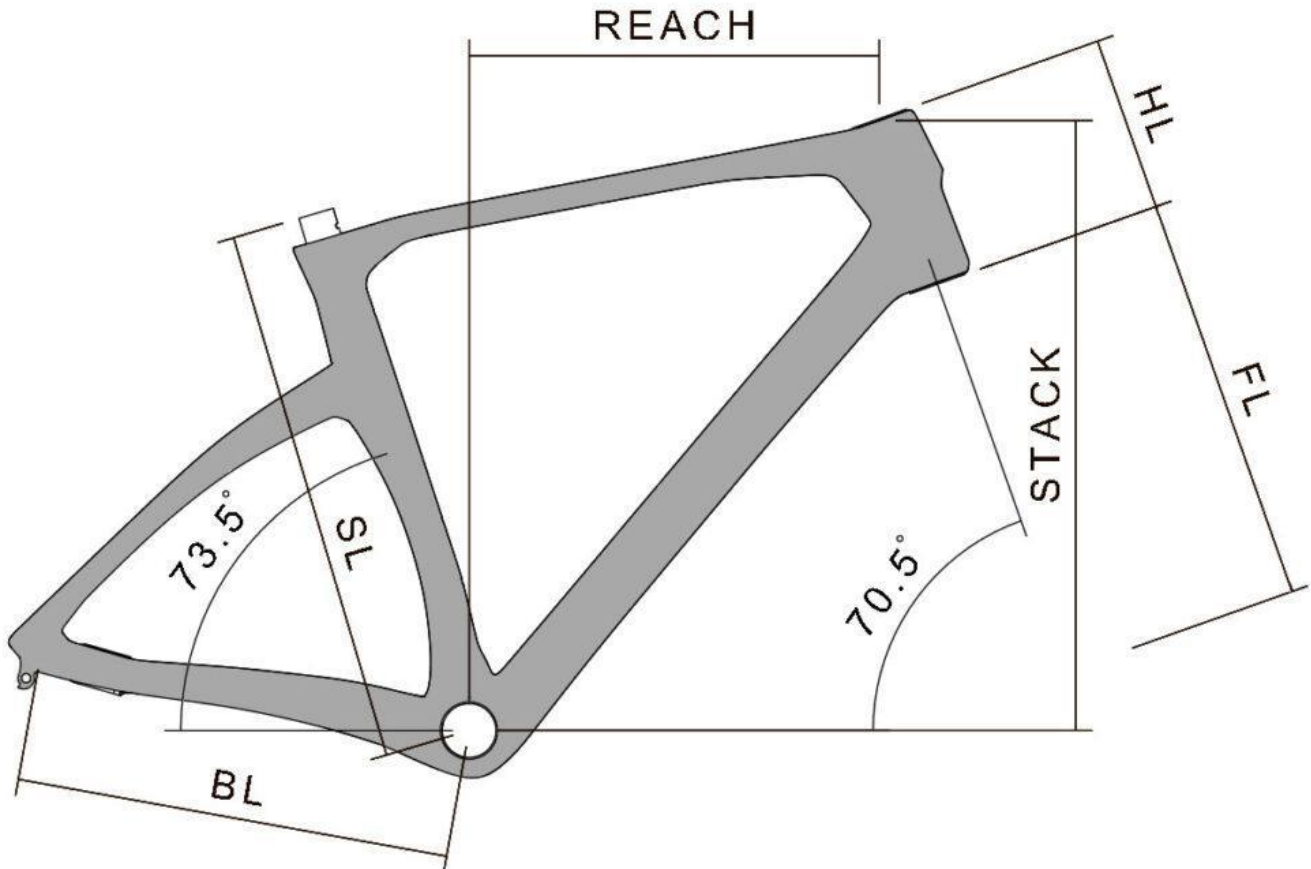
La reproduction du présent document n'est autorisée que sous sa forme intégrale. Il comporte 4 pages.  
*Partial reproduction forbidden. There are 4 pages.*  
Les prestations rapportées dans ce document sont couvertes par l'accréditation ISO/IEC 17025 : 2017 (portées disponibles sur [www.cofrac.fr](http://www.cofrac.fr) N° accréditation 1-1570), exceptées celles identifiées par le symbole « # »  
*The services reported in this document are covered by ISO/IEC 17025: 2017 accreditation (scopes available on [www.cofrac.fr](http://www.cofrac.fr) Accreditation No. 1-1570), except those identified by the symbol "#"*  
△ l'information est fournie par le client *the information is provided by the customer*

  
 Signature numérique de  
**Sébastien BARROUX**  
 Date : 2025.09.16  
 10:33:46 +02'00'

**Responsable de Pôle**  
**Pole manager**

## 7. Size

The BRANCHY frame geometry and the correspondence with rider size is shown in the table below:





	S	M	L	XL	XXL
Size	164-171 cm	171-178 cm	178-185 cm	185-192 cm	192-200 cm
Stack	555mm	575mm	595mm	616mm	636mm
Reach	383mm	394mm	404mm	414mm	426mm
Stack to Reach Ratio	1.45:1	1.46:1	1.47:1	1.49:1	1.49:1
Seat Tube Length, C-T	473.2mm	492.9mm	526.1mm	549.6mm	571.4mm
Top Tube Length, Effective/Horizontal HT Top	547mm	564mm	580mm	596mm	614.4mm
Top Tube Slope	11.1deg	10.9deg	9.3deg	8.9deg	8.5deg
Head Tube Angle	70.5deg	70.5deg	70.5deg	70.5deg	70.5deg
Seat Tube Angle	73.5deg	73.5deg	73.5deg	73.5deg	73.5deg
Head Tube Length	129mm	150mm	171mm	193mm	214mm
Bottom Bracket Drop	75mm	75mm	75mm	75mm	75mm
Bottom Bracket Height	276mm	276mm	276mm	276mm	276mm
Chainstay Length	428mm	428mm	428mm	428mm	428mm
Chainstay Horizontal Length	421.4mm	421.4mm	421.4mm	421.4mm	421.4mm
Front-Center	605.4mm	623.3mm	640.3mm	657.6mm	676.6mm
Front-Center Horizontal	600.7mm	618.8mm	635.9mm	653.3mm	672.4mm
Wheelbase	1022.1mm	1040.2mm	1057.3mm	1074.7mm	1093.8mm
Fork Offset/Rake	45mm	45mm	45mm	45mm	45mm
Fork Length (On-Axis)	397mm	397mm	397mm	397mm	397mm
Base Build					
Wheel Size	700C/29 in	700C/29 in	700C/29 in	700C/29 in	700C/29 in
	622 mm BSD	622 mm BSD	622 mm BSD	622 mm BSD	622 mm BSD
Tire Width	40mm	40mm	40mm	40mm	40mm
Tire Width Max	47mm	47mm	47mm	47mm	47mm
Tire Outer Diameter	702mm	702mm	702mm	702mm	702mm
Bike Length with Tires	1724.1mm	1742.2mm	1759.3mm	1776.7mm	1795.8mm
Crank Length	172.5mm	172.5mm	175mm	175mm	175mm
Handlebar Width	420mm	420mm	440mm	440mm	440mm
Stem Length	70mm	80mm	80mm	80mm	80mm

## 8. Standard / Custom Markings

The standard marking, made by laser engraving, consists of the following:

Marking at the bottom bracket, including the model, size, manufacturing date, and serial number.



Logo



Marking on the lower down tube



Custom markings can be applied by laser engraving and/or paint.

Examples of customisation on the top tube:



Examples of customisation on the down tube:





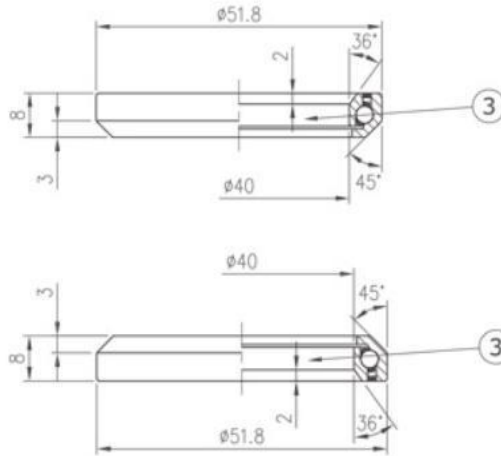
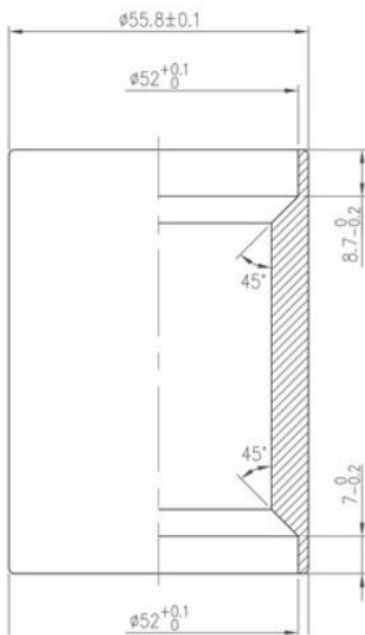
## 9. Interfaces

### 9.1 Tyre Sections

Model	Minimum section	Maximum section	Recommended section
BRANCHY	30mm	48mm (varies depending on tread and rim width)	30-32mm for mainly road use 35mm for optimum speed on smooth terrain 40mm for a good all-round compromise 45mm for rough terrain

### 9.2 Headset Interfaces

Jeu de direction IS52 / IS52

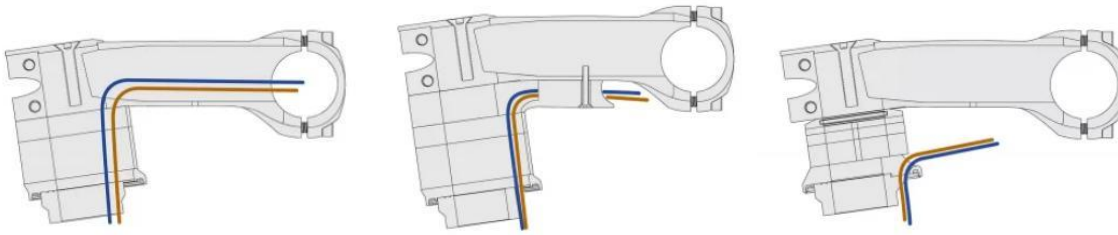


The BRANCHY bikes are compatible with headsets including FSA No.55, FSA No.69, DEDA DCR, DEDA S-DCR, Ritchey Switch, and many more.

### 9.3 Cable Routing

The BRANCHY frame is designed for internal cable routing. Several routing paths are available for cables and hydraulic hoses.

Up to 4 cables/hoses can be integrated with the systems mentioned above (e.g. 2 hoses and 2 cables).



To ensure good access for routing cables and hoses, the bottom bracket must be installed after the hoses, cable housings, or cables have been threaded through.

## 9.4 Bottom Bracket Interface

Carbon insert with Pressfit PF30 interface, 68mm length.



Adapters allow the fitting of most cranksets, Shimano, SRAM, or other brands  
 Example adapter for fitting a Shimano crankset (24mm spindle):

<p>TOKEN TK4624 + BSA bottom bracket</p>	
<p>Rotor - Road Press Fit Bottom Bracket 4624</p>	

## 9.5 Seat Post Interfaces

Seat post diameter	31.6mm
Seat clamp	34.9mm

## 9.6 Rear Wheel Interfaces

Type	12x142mm
Axle length	175mm
Axle thread	M12x1.5

## 9.7 Rear Derailleur Interface

The rear derailleur interface is non-UDH, compatible with all Shimano and Campagnolo derailleurs, but not all SRAM derailleurs.

## 9.8 Front Derailleur Interfaces

BRANCHY frames can be equipped on request with a front derailleur interface.

Both mechanical cable-operated and electronic derailleurs can be fitted.

For cable derailleurs, compatibility is guaranteed only for SHIMANO derailleurs

## 9.9 Rear Brake Caliper Interface

The rear brake caliper interface is flatmount type, designed for a 160mm disc.

## 9.10 Bikepacking Interfaces (GROOTY ENDURANCE & BRANCHY)

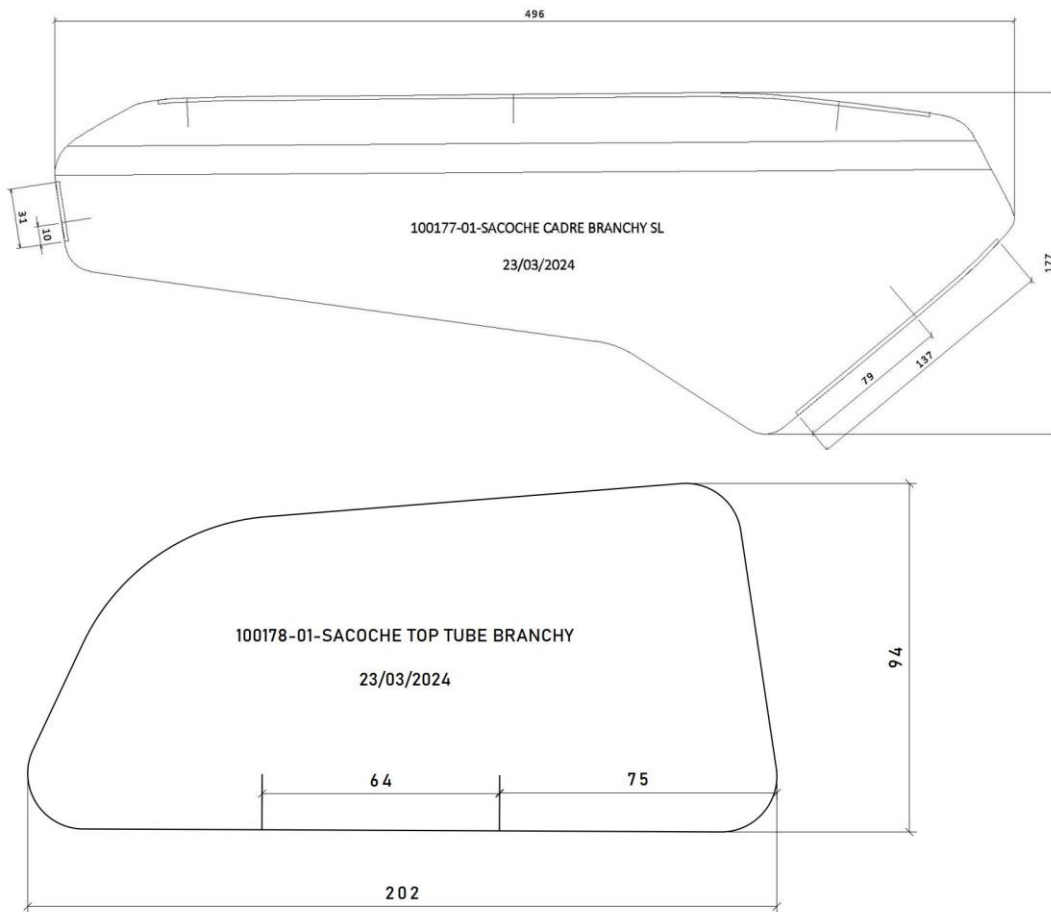
BRANCHY frames are equipped with threaded interfaces for frame bags.

Two stainless steel M5 threaded inserts allow a top tube bag to be fitted

5 stainless steel M5 threaded inserts allow a frame bag to be fitted.

Details of the bikepacking interface positions on the BRANCHY can be provided on request. An SVG or DXF file can also be supplied to enable the creation of custom bags.

Example drawing for bag fabrication:





Custom bags made by GunungApi (<https://www.etsy.com/fr/shop/GunungApi>)

Custom bags can be supplied. Contact us for more details.

Bolt-on frame bags are supplied with EPDM washers to be placed between the bag and the frame, to improve the seal and protect the frame at the contact points.

## 9.11 Mudguard Interfaces

BRANCHY frames have interfaces for fitting mudguards and/or a rear rack.

A bridge is supplied on request, required for fitting a mudguard

The BRANCHY is notably compatible with HEBIE ALUMEE mudguards, ideal for commuting use.



*Figure 1 Mudguard mounting*

## 9.12 Rack Interfaces (BRANCHY)

BRANCHY frames have interfaces for fitting a rear rack.

The rack can be attached either to the seat post or to the seat stays.

Due to the frame geometry, the seat stay interfaces are relatively low; it is recommended to attach to the seat post, or use a specific seat clamp with integrated rack interfaces.

The interfaces are rated for loads up to 30 kg.



Figure 2 Ortlieb Quick Rack

## 10. About WOODALPS

WOODALPS is the meeting of the expertise of a mechanical engineer specialised in composites, with 15 years of experience in aeronautics, space, and motorsport, and a passion for cycling.

Since 2012, we have been designing and refining wooden bikes that combine performance, design, and innovation, achieving the recognised excellence of the WOODALPS models.

On sale since 2023, our bikes are manufactured in a workshop of over 90 m<sup>2</sup>, equipped with precision machinery including two CNC machining centres and a spray booth, guaranteeing an impeccable level of finish.

Arnaud Pornin

